

**Legend**

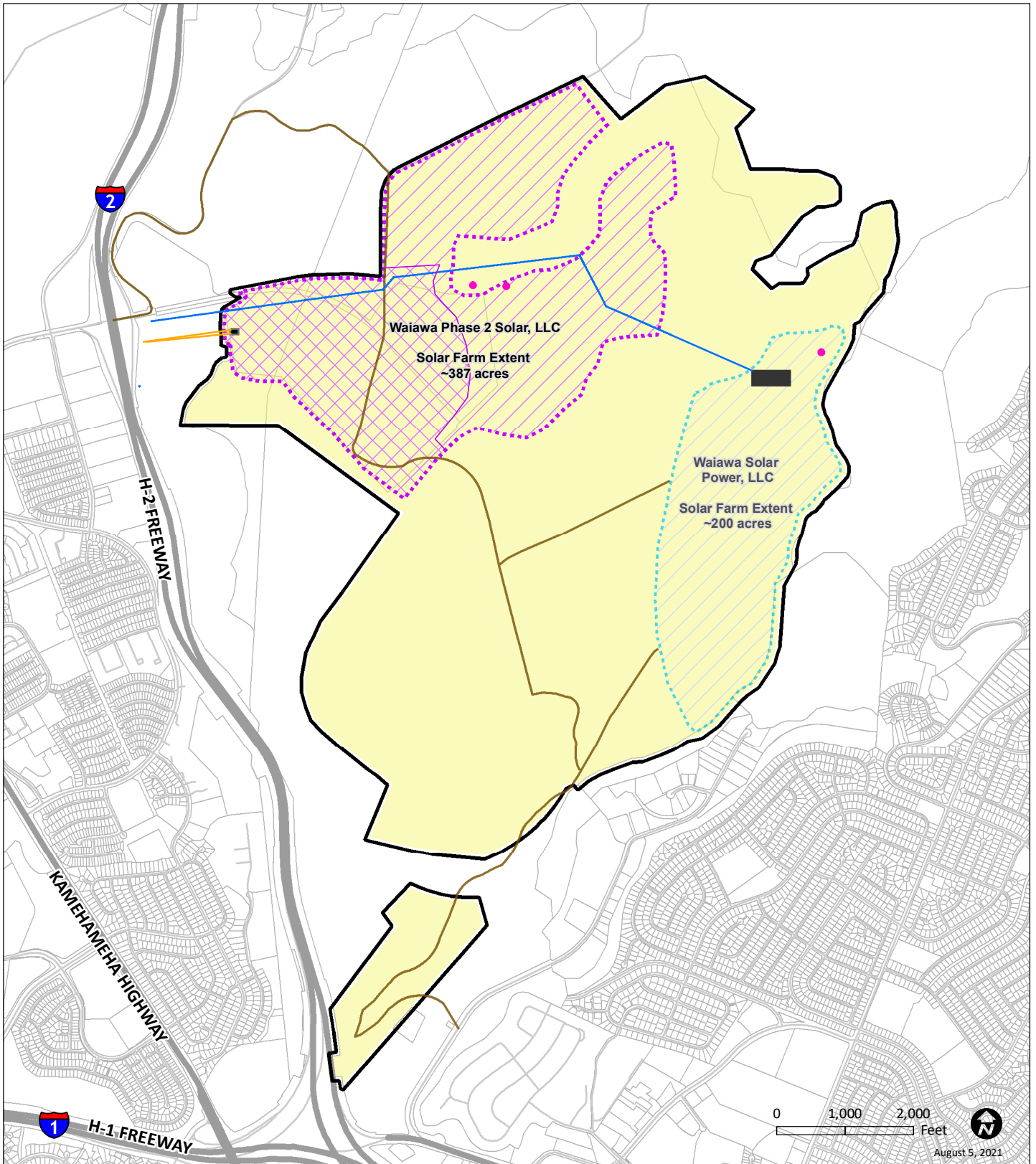
- KS Waiawa Property (SLUD- Urban, Docket A87-610)
- Agriculture District
- Urban District

**STATE LAND USE DISTRICT MAP**

Source: State Land Use Commission (2019)

Disclaimer: This Graphic has been prepared for general planning purposes only and should not be used for boundary interpretations or other spatial analysis.





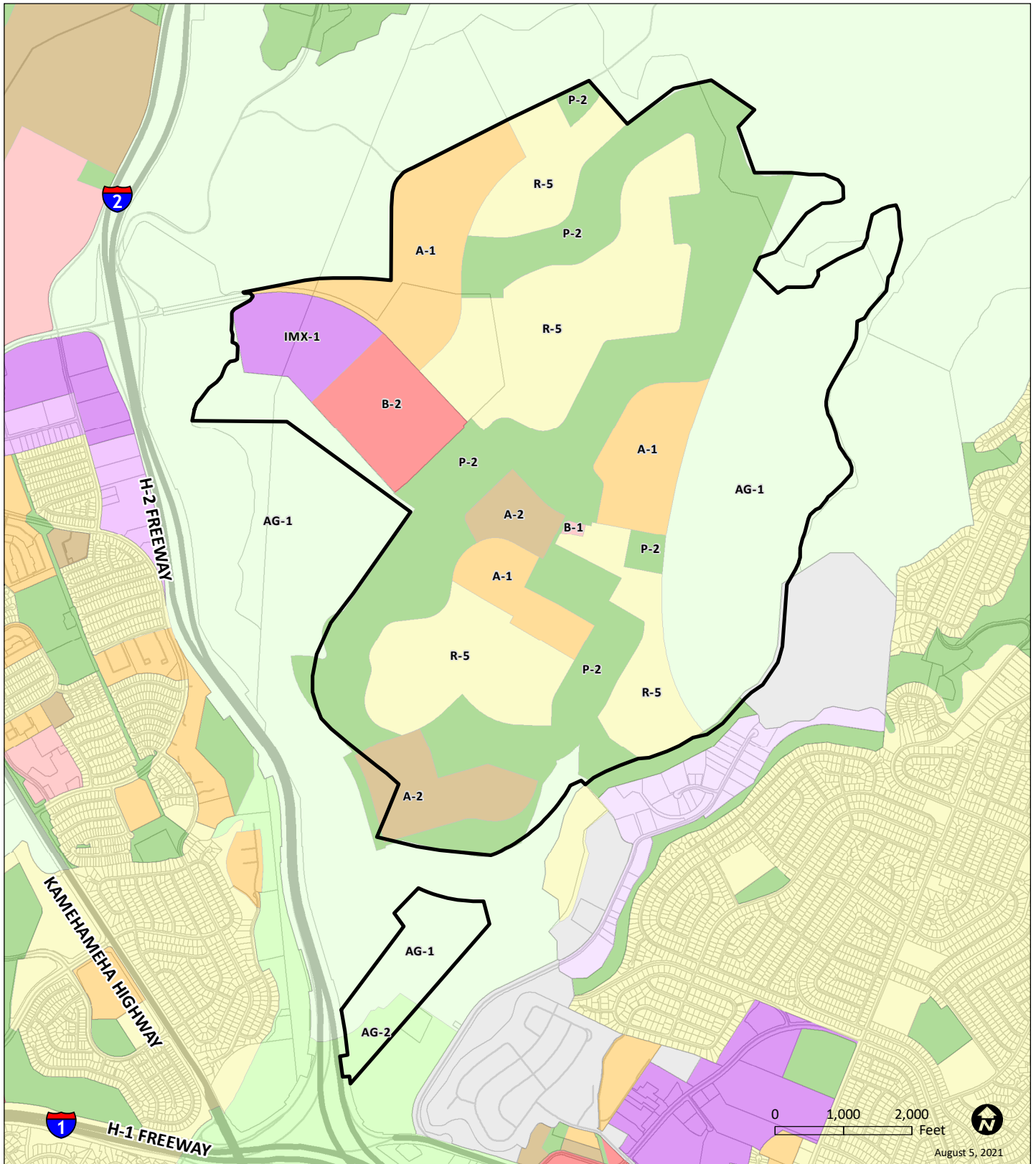
**Legend**

- Waiawa Phase 2 Solar, LLC Solar Farm Extent ~387 acres
- Waiawa Solar Power, LLC Solar Farm Extent ~ 200 acres
- Utility Improvements Area
- KS Waiawa Property (SLUD- Urban, Docket A87-610)

- Parcel A
- Parcel B
- Archaeological Preservation Area
- Waiawa Phase 2 Solar, LLC "Gen-Tie Alignment"
- Waiawa Solar Power, LLC "Gen-Tie Alignment"
- Access Route

**CONCEPTUAL SITE PLAN MAP**

Disclaimer: This Graphic has been prepared for general planning purposes only and should not be used for boundary interpretations or other spatial analysis.



**Legend**

- KS Waiawa Property (SLUD- Urban, Docket A87-610)
- A-1 Low Density Apt.
- A-2 Medium Density Apt.
- AG-1 Restricted Agriculture
- AG-2 General Agriculture
- B-1 Neighborhood Business
- B-2 Community Business
- IMX-1 Industrial Mixed Use
- P-2 General Preservation
- R-5 Residential

**COUNTY ZONING MAP**



Disclaimer: This Graphic has been prepared for general planning purposes only and should not be used for boundary interpretations or other spatial analysis.

Source: City and County of Honolulu, 2021  
**EXHIBIT "3"**

August 5, 2021



