

DEPARTMENT OF PLANNING AND PERMITTING  
**CITY AND COUNTY OF HONOLULU**

650 SOUTH KING STREET, 7<sup>TH</sup> FLOOR • HONOLULU, HAWAII 96813  
PHONE: (808) 768-8000 • FAX: (808) 768-8041  
DEPT. WEB SITE: [www.honoluluodpp.org](http://www.honoluluodpp.org) • CITY WEB SITE: [www.honolulu.gov](http://www.honolulu.gov)

KIRK CALDWELL  
MAYOR



GEORGE I. ATTA, FAICP  
DIRECTOR

ARTHUR D. CHALLACOMBE  
DEPUTY DIRECTOR

2014/SUP-6 (RY)

January 16, 2015

**NOTICE OF APPLICATION**  
**SPECIAL USE PERMIT**

PROJECT NAME	:	Kawailoa Solar Farm
APPLICANT	:	Kawailoa Solar, LLC
LANDOWNER	:	B. P. Bishop Trust Estate
LOCATION	:	Kawailoa, North Shore, Oahu
TAX MAP KEY	:	6-1-005: Portion of 1 and 6-1-006: Portion of 1
STATE LAND USE DISTRICT	:	Agricultural District
ZONING	:	AG-1 Restricted Agricultural District
ACCEPTANCE DATE	:	January 16, 2015

This is to inform you that we are reviewing an application for a Special Use Permit to establish a solar energy facility on Land Study Bureau Class A, B, and C designated lands, pursuant to Sections 205-2 and 205-4.5 of the Hawaii Revised Statutes.

You may review the application material at our office, Monday through Friday, 7:45 a.m. to 4:30 p.m., at 650 South King Street, or at the Wahiawa Satellite City Hall located at 330 North Cane Street, Wahiawa, Hawaii, 96786, Monday through Friday, 8:00 a.m. to 4:00 p.m. The Summary Description and Location Map can be found at [www.honoluluodpp.org/Planning/StateSpecialUsePermit](http://www.honoluluodpp.org/Planning/StateSpecialUsePermit).

If you wish to offer comments on this application, you may write to the Department. Please reference project number (2014/SUP-6) in your response. If you know of any interested person who has not received this notification, we would appreciate it if you would inform him/her.

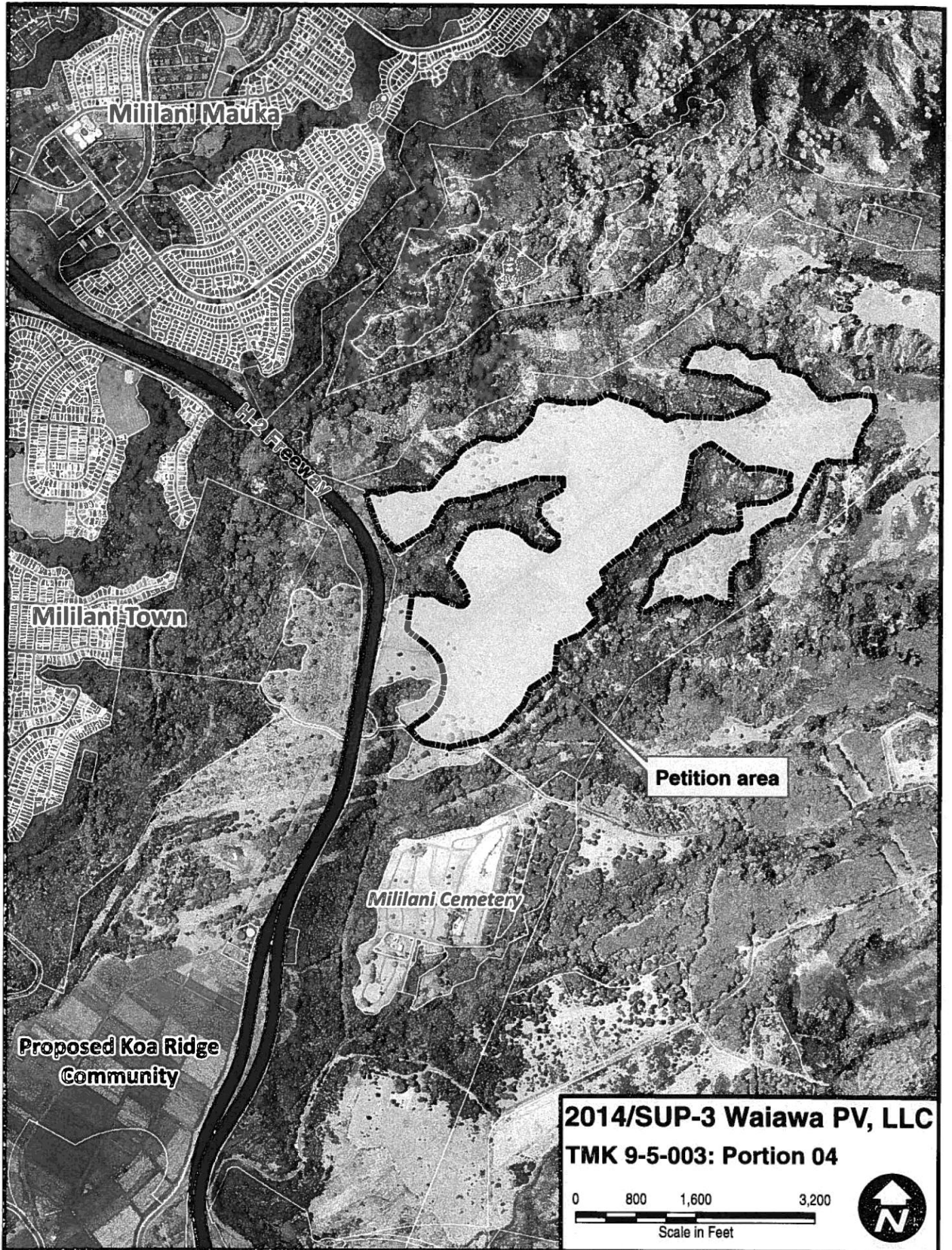
Should you have any questions, please contact Raymond Young of our staff at 768-8049 or [rcsyoung@honolulu.gov](mailto:rcsyoung@honolulu.gov).

Very truly yours,

  
George I. Atta, FAICP  
Director

GIA:kh

Reply by: **February 15, 2015**



Mililani Mauka

H-2 Freeway

Mililani Town

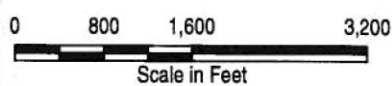
Petition area

Mililani Cemetery

Proposed Koa Ridge  
Community

**2014/SUP-3 Waiawa PV, LLC**

**TMK 9-5-003: Portion 04**



DEPARTMENT OF PLANNING AND PERMITTING  
SUMMARY DESCRIPTION

APPLICANT : Kawaiiloa Solar, LLC

LANDOWNER : B. P. Bishop Trust Estate

REQUEST : A Special Use Permit to establish a solar energy facility on lands classified by the Land Study Bureau as Class A, B, and C, pursuant to Sections 205-2 and 205-4.5, Hawaii Revised Statutes

LOCATION : In the vicinity of Ashley Road, approximately 6,000 feet south of Waimea Beach Park and 4 miles northeast of Haleiwa Town, at Kawaiiloa, North Shore, Oahu, Hawaii

TAX MAP KEY : 6-1-005: Portion of 1 and 6-1-006: Portion of 1

LAND AREA : Approximately 384.1 Acres

NORTH SHORE SUSTAINABLE COMMUNITIES PLAN LAND USE MAP : Agriculture

STATE LAND USE DISTRICT : Agricultural

EXISTING USE : Open space

SURROUNDING LAND USE : Wind turbine renewable energy generation system, open space, diversified agriculture, military training and preservation lands

---

DEPARTMENT:

COMMENTS:

---

By

Date



KIRK CALDWELL  
 MAYOR

GEORGE I. ATTA, FAICP  
 DIRECTOR  
 ARTHUR D. CHALLACOMBE  
 DEPUTY DIRECTOR

2014/SUP-6 (RY)

January 16, 2015

**NOTICE OF APPLICATION  
 SPECIAL USE PERMIT**


PROJECT NAME : Kawailoa Solar Farm  
 APPLICANT : Kawailoa Solar, LLC  
 LANDOWNER : B. P. Bishop Trust Estate  
 LOCATION : Kawailoa, North Shore, Oahu  
 TAX MAP KEY : 6-1-005; Portion of 1 and 6-1-006; Portion of 1  
 STATE LAND USE DISTRICT : Agricultural District  
 ZONING : AG-1 Restricted Agricultural District  
 ACCEPTANCE DATE : January 16, 2015

This is to inform you that we are reviewing an application for a Special Use Permit to establish a solar energy facility on Land Study Bureau Class A, B, and C designated lands, pursuant to Sections 205-2 and 205-4.5 of the Hawaii Revised Statutes.

You may review the application material at our office, Monday through Friday, 7:45 a.m. to 4:30 p.m., at 650 South King Street, or at the Wahiawa Satellite City Hall located at 330 North Cane Street, Wahiawa, Hawaii, 96786, Monday through Friday, 8:00 a.m. to 4:00 p.m. The Summary Description and Location Map can be found at [www.honolulu.gov/Planning/StateSpecialUsePermit](http://www.honolulu.gov/Planning/StateSpecialUsePermit).

If you wish to offer comments on this application, you may write to the Department. Please reference project number (2014/SUP-6) in your response. If you know of any interested person who has not received this notification, we would appreciate it if you would inform him/her.

Should you have any questions, please contact Raymond Young of our staff at 768-8049 or [rcsyoung@honolulu.gov](mailto:rcsyoung@honolulu.gov).

Very truly yours,  
  
 George I. Atta, FAICP  
 Director

GIA:kh

Reply by: **February 15, 2015**

