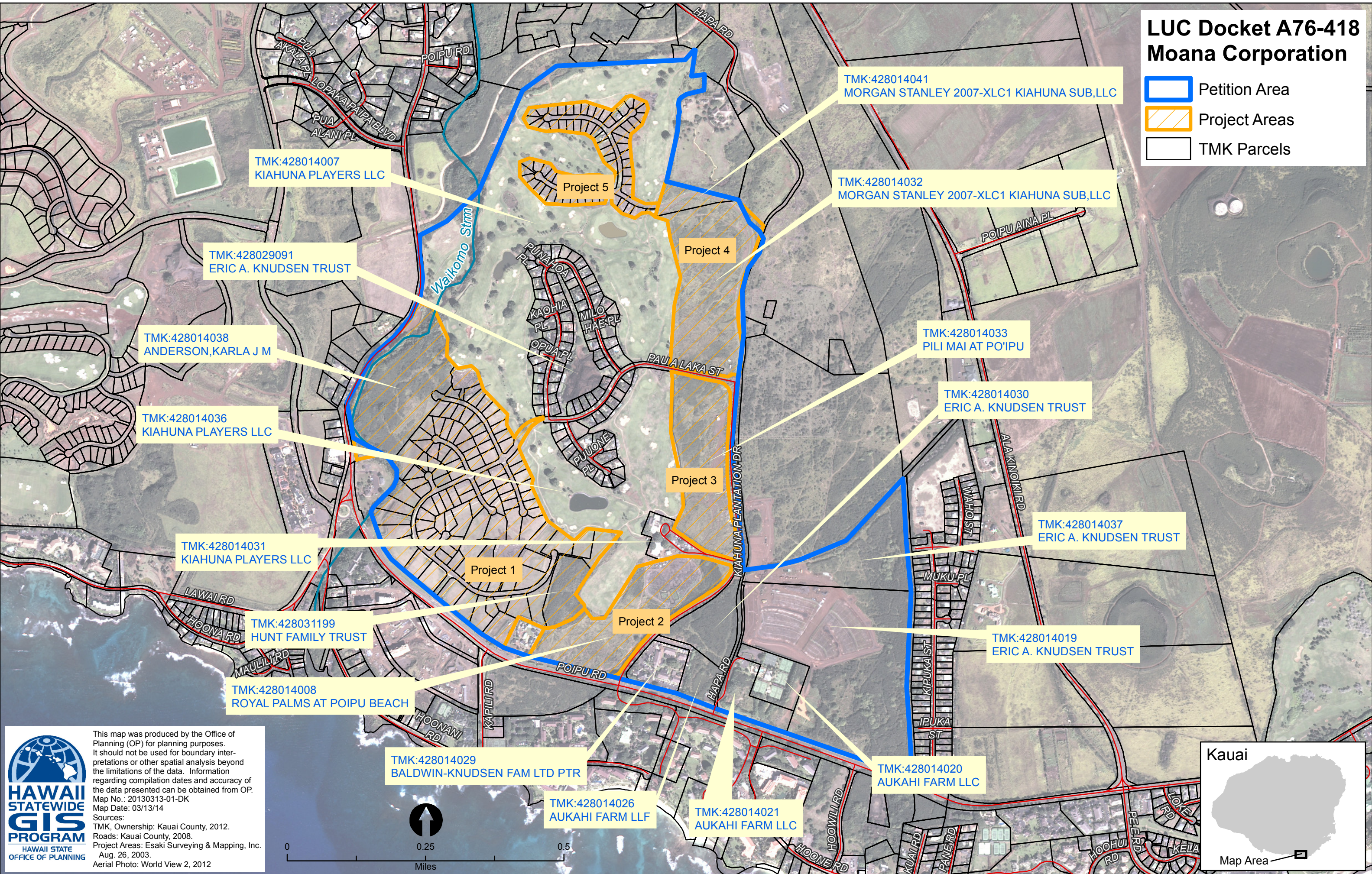

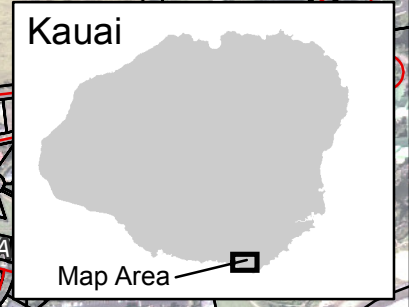


# LUC Docket A76-418 Moana Corporation

Petition Area  
 Project Areas  
 TMK Parcels

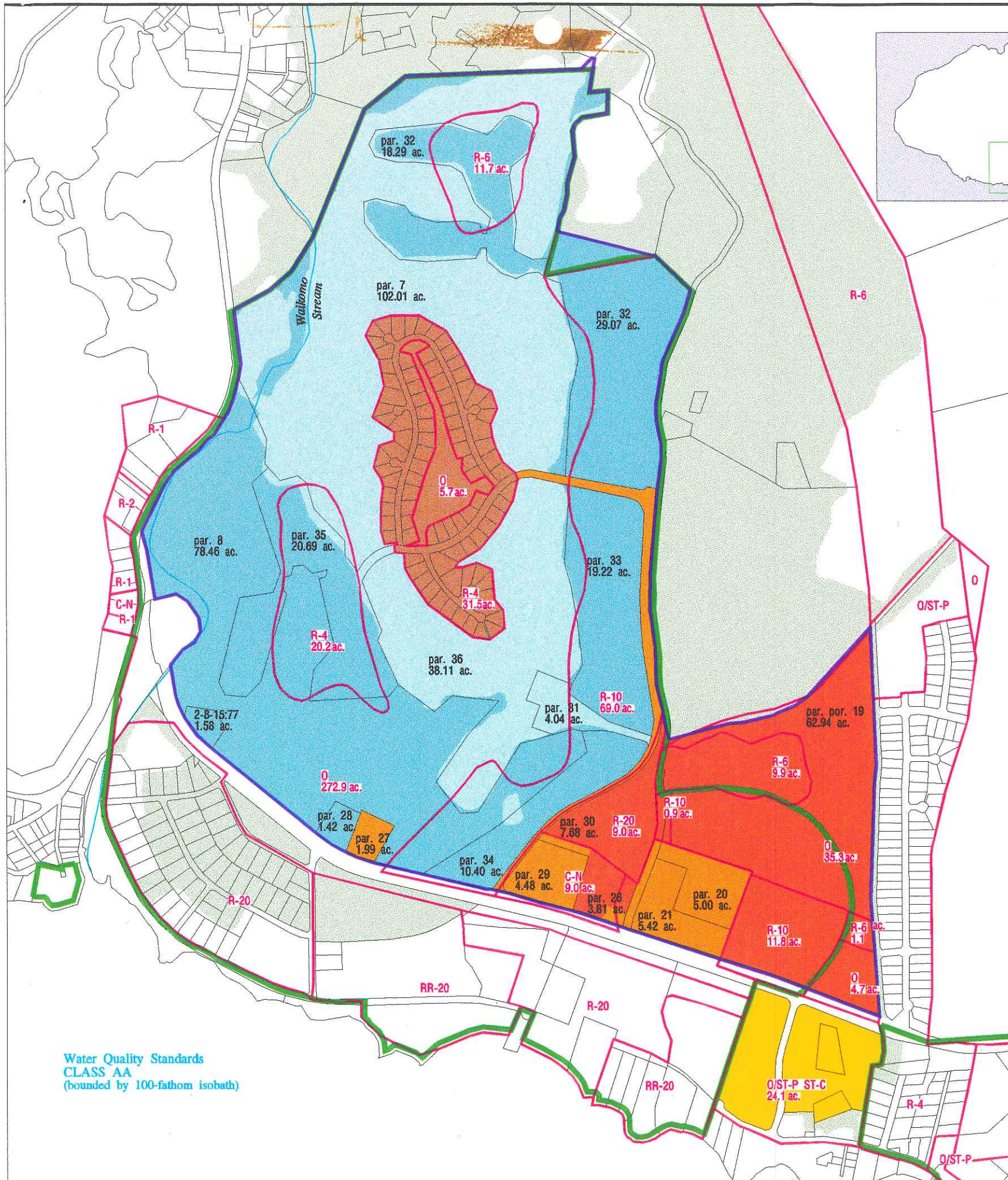



 This map was produced by the Office of Planning (OP) for planning purposes. It should not be used for boundary interpretations or other spatial analysis beyond the limitations of the data. Information regarding compilation dates and accuracy of the data presented can be obtained from OP. Map No.: 20130313-01-DK Map Date: 03/13/14 Sources: TMK, Ownership: Kauai County, 2012. Roads: Kauai County, 2008. Project Areas: Esaki Surveying & Mapping, Inc. Aug. 26, 2003. Aerial Photo: World View 2, 2012



OP EXHIBIT A

# Comparison of the Developed and Undeveloped Properties Within the Petition Area

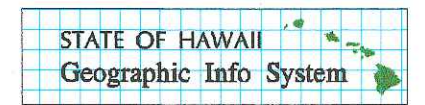
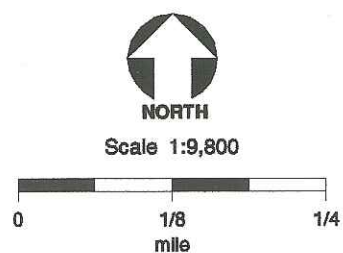


- Knudsen Lands Undeveloped
  - Knudsen Lands Developed
  - Sports Shinko Lands Undeveloped
  - Sports Shinko Lands Developed
  - County of Kauai Lands (Park Site)
  - 90-Single Family Lots, Roads and Open Area Lands Developed
  - Undeveloped Lands Surrounding the Petition Area
  - State Land Use Petition Boundary
  - Parcel Boundary (The parcel numbers refer to Tax Map 2-8-14 or as noted)
  - Time Share Boundary
  - Zone Boundary
- Residential District:**  
 R-1 (1 unit/acre)  
 R-2 (2 units/acre)  
 R-4 (4 units/acre)  
 R-6 (6 units/acre)  
 R-10 (10 units/acre)  
 R-20 (20 units/acre)
- Resort District:**  
 RR-10 (10 units/acre, 20 hotel rooms/acre)  
 RR-20 (20 units/acre, 40 hotel rooms/acre)
- Commercial District:**  
 C-N neighborhood
- Open District:**  
 O open
- Special Treatment District:**  
 ST-P public  
 ST-C cultural: historic

Parcels - Digitized by R.M. Towill Co., current to 1990.  
 State Land Use Petition Boundary - Belt Collins Hawaii, Testimony of Knudsen Trust Before The Land Use Commission, April 4, 1995.  
 Stream - USGS DLG files, 1:24,000, 1983.  
 Tax map key numbers and acreages - State of Hawaii, Realty Atlas, 1994.  
 Time Share Boundary - Kauai County Zoning Maps.  
 Undeveloped Areas - Knudsen Trust Aerial Photograph, March 14, 1995.  
 Water Quality Classification - State Department of Health, Office of Environmental Planning, October 1987.  
 Zoning - Planning Department, County of Kauai, photocopied paper maps digitized by OSP, December 1959.  
 Zoning acreages - GIS-derived from digitized zoning maps.

OSP  
**A76-418 MOANA CORPORATION** Feb. 1996

Water Quality Standards  
**CLASS AA**  
 (bounded by 100-fathom isobath)



This map was produced by the Office of State Planning (OSP) for planning purposes. It should not be used for boundary interpretations or other spatial analysis beyond the limitations of the data. Information regarding completion dates and accuracy of the data presented can be obtained from OSP.

Poipu, Kauai