

---

# Maui Island Plan

---

*Island of Maui*

*General Plan 2030*

---

LAND USE COMMISSION  
STATE OF HAWAII

2013 JUL 24 A 8:36

For information regarding this plan please contact the County of Maui or the Maui County Department of Planning. Copies of this plan are available from the Maui County Department of Planning.

In loving memory, Christopher L. Hart, Robin Foster,  
Rae and Carl Lindquist

Published in the United States by  
The County of Maui  
250 South High Street  
Wailuku, Hawaii 96793

EXHIBIT /

## *Directed Growth Plan*

---

### *Pulehunui*

The Pulehunui planned growth area encompasses just over 639 acres and is located in the ahupua`a of Pulehunui and to the east of Mokulele Highway (see Figure 8-5). The planned growth area will be used primarily for heavy industrial, public/quasi-public, and recreational purposes. Commercial uses should be limited.

### **Planned Growth Area Rationale**

The Pulehunui planned growth area envisions land uses that are compatible with surrounding agricultural operations. The planned growth area represents a logical expansion of industrial land use in the area. The area's location, midway between Kihei and Kahului, makes it an ideal site to serve the island's long-term heavy industrial land use needs. Development of the area must ensure the protection of view corridors along Mokulele Highway as well as mauka and makai view planes. Linear-strip development along Mokulele Highway is strongly discouraged. Buildings should be setback significantly from the highway, and all traffic-light timing along Mokulele Highway should be coordinated for optimum traffic flow. The Pulehunui planned growth area is located on Directed Growth Map #C4 and #C5. Table 8-13 provides a summary of the planned growth area:

**Table 8 - 13: Pulehunui Planned Growth Area**

|                                       |                      |   |
|---------------------------------------|----------------------|---|
| <b><i>Background Information:</i></b> |                      |   |
| Project Name:                         | Pulehunui Industrial | Directed Growth Map #: C4, C5               |
| Type of Growth:                       | Urban Expansion      | Gross Site Acreage: Approximately 639 Acres |

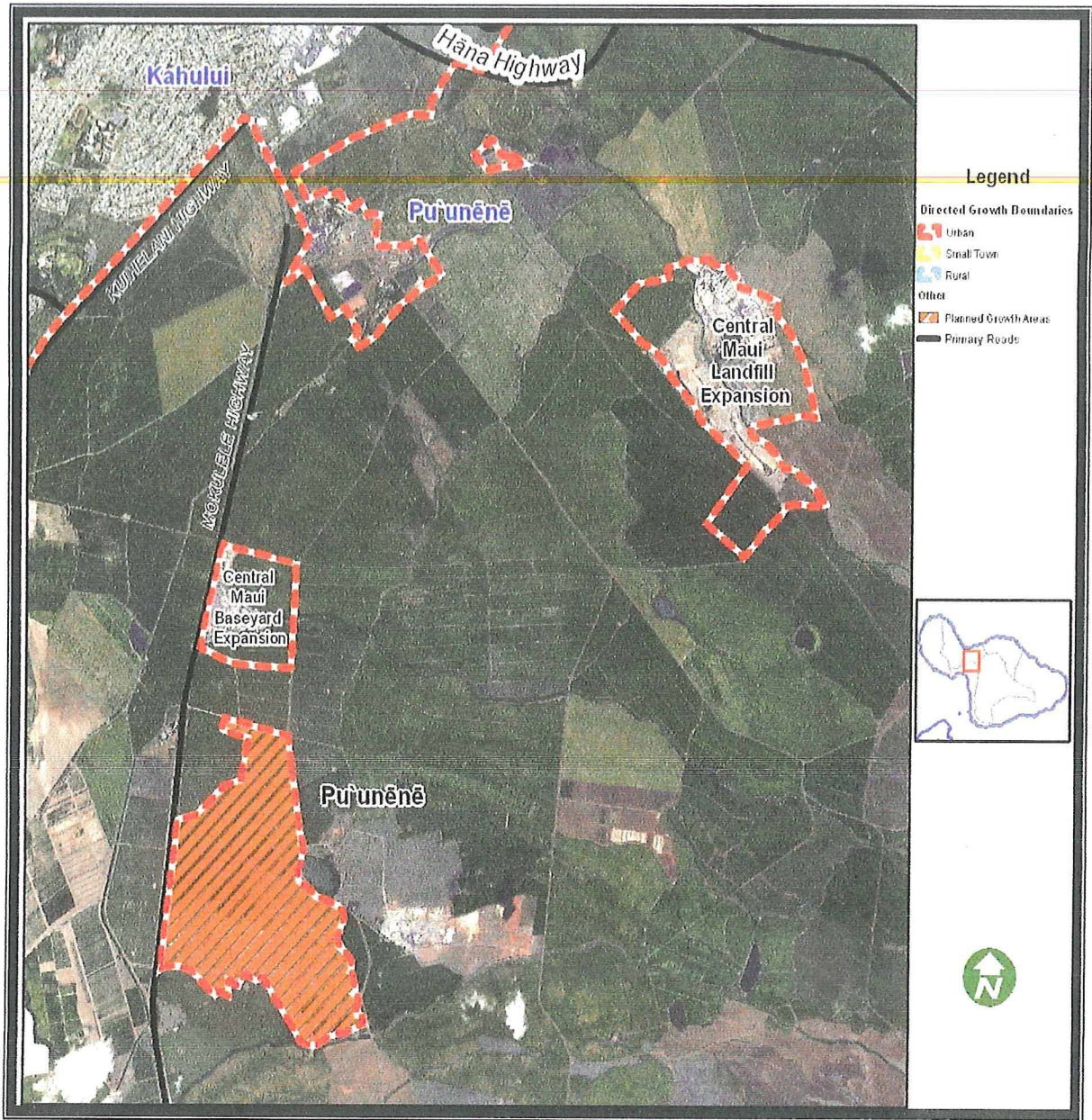


Figure 8-5: Pulchunui Planned Growth Area.

### Kīhei – Mākena – Planned Protected Areas

The Kīhei-Mākena community plan region has the second highest resident population with over 27,000 people in 2010. Two planned protected areas have been identified in the Kīhei-Mākena community plan region within Mā'alaea and Mākena; the Mākena – La Perouse – Kanaio Protected Area and the Keālia National Wildlife Refuge. A brief discussion of each protected area is provided below.